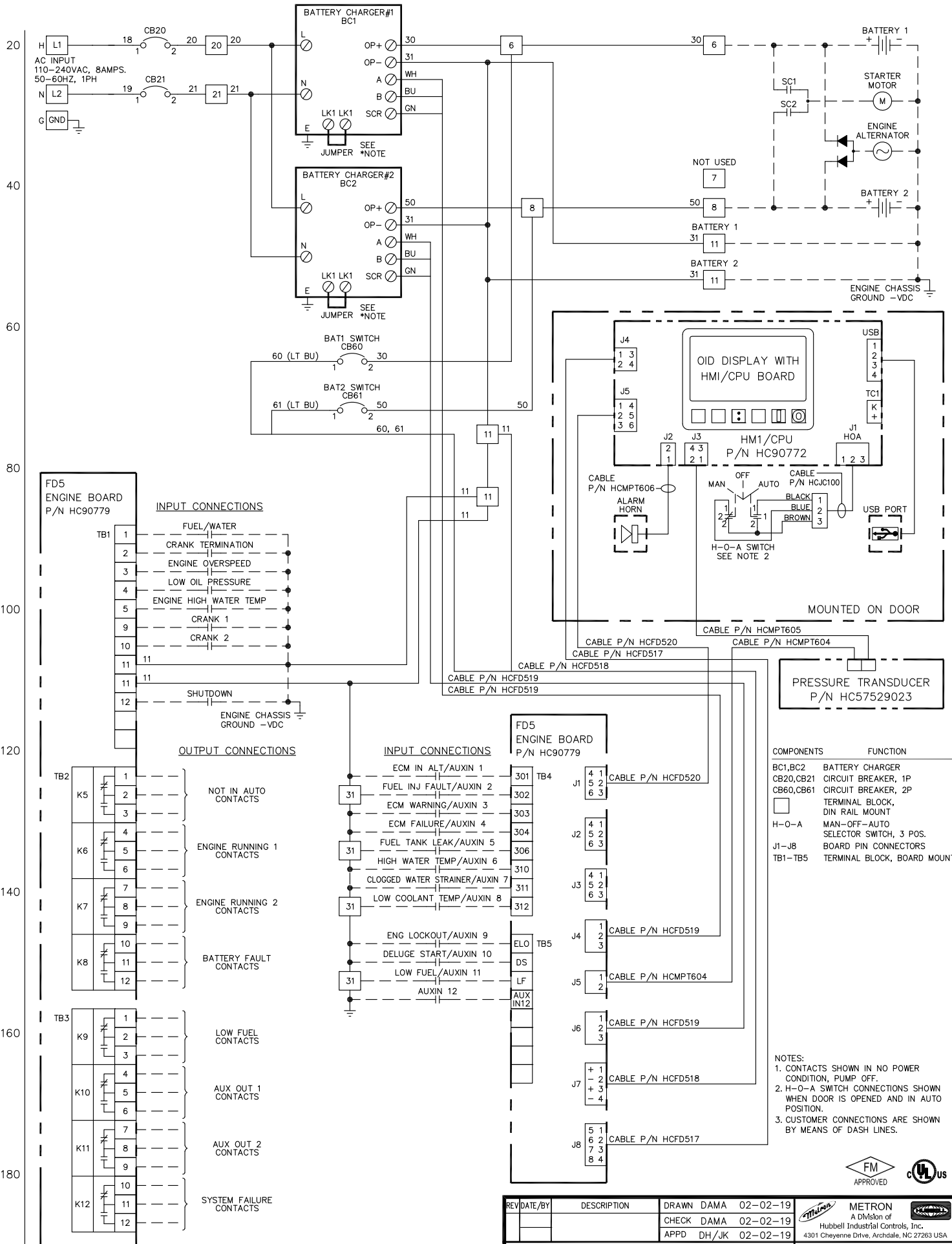


*NOTE: REMOVE JUMPER FOR 24VDC BATTERY CHARGER



COMPONENTS	FUNCTION
BC1, BC2	BATTERY CHARGER
CB20, CB21	CIRCUIT BREAKER, 1P
CB60, CB61	CIRCUIT BREAKER, 2P
[Symbol]	TERMINAL BLOCK, DIN RAIL MOUNT
H-O-A	MAN-OFF-AUTO SELECTOR SWITCH, 3 POS.
J1-J8	BOARD PIN CONNECTORS
TB1-TB5	TERMINAL BLOCK, BOARD MOUNT

NOTES:
 1. CONTACTS SHOWN IN NO POWER CONDITION, PUMP OFF.
 2. H-O-A SWITCH CONNECTIONS SHOWN WHEN DOOR IS OPENED AND IN AUTO POSITION.
 3. CUSTOMER CONNECTIONS ARE SHOWN BY MEANS OF DASH LINES.



REV	DATE	BY	DESCRIPTION	DRAWN	DAMA	02-02-19
				CHECK	DAMA	02-02-19
				APPD	DH/JK	02-02-19

SCHMATIC DIAGRAM
 FD5 DIESEL ENGINE
 FIRE PUMP CONTROLLER

OPTIONS: J
 HCDF55

SCALE NTS SHEET 1 OF 1